

# CERTIFICATE OF LOCATION OF GOVERNMENT CORNER

County of Anoka

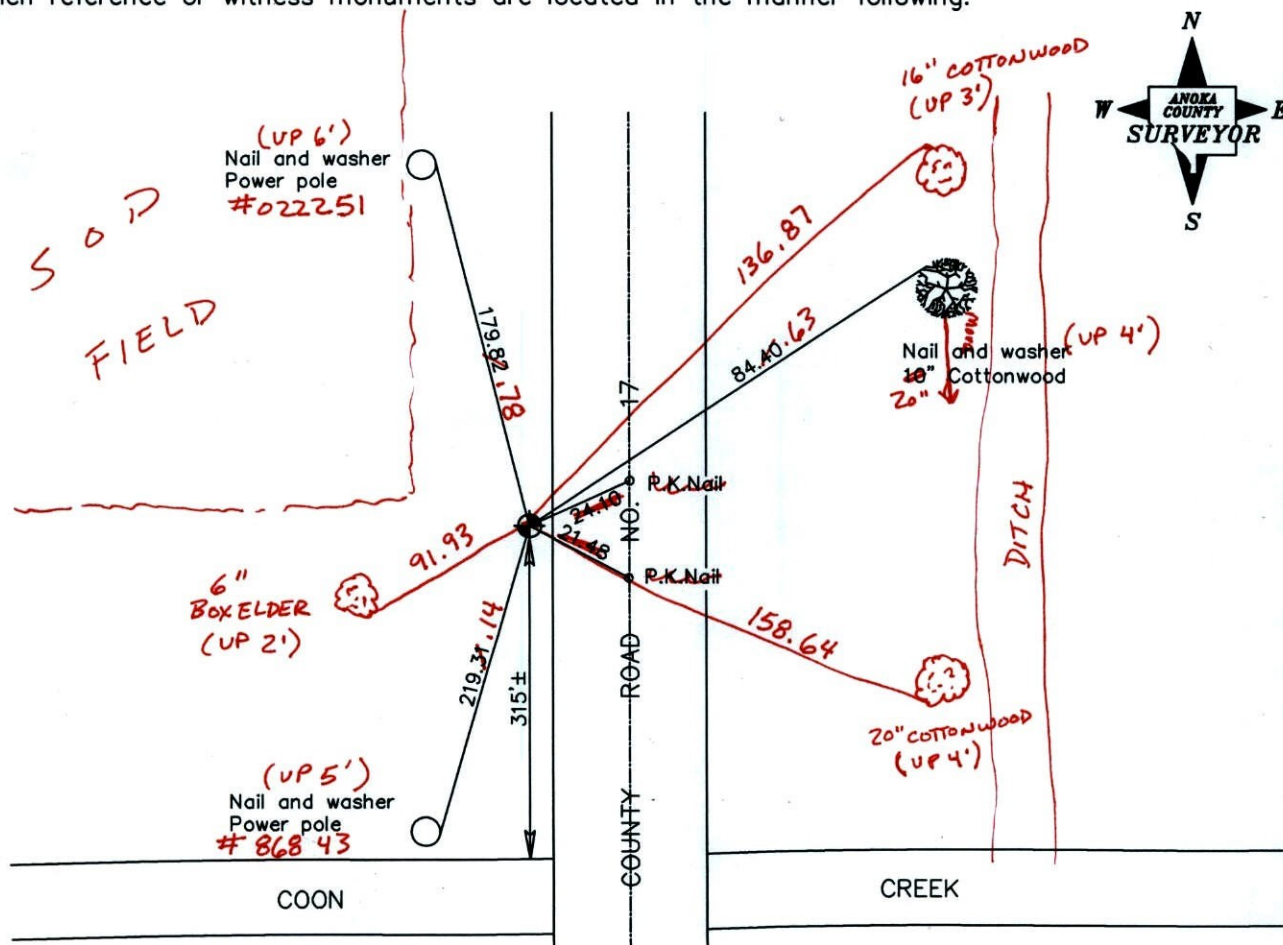
State of Minnesota

East 1/4 Corner of Sec. 26 Township 32 Range 23

I hereby certify that on the 24th day of August, 1966, I found the described corner which was evidenced by area resurvey

and I further certify that to perpetuate the location of said corner, I did, at the exact location thereof, place a permanent marker consisting of a cast iron monument down 0.5'±, near edge of blacktop

which reference or witness monuments are located in the manner following:



BK-SS  
T/T  
Revised date

N.A.D. 1983 Coordinates  
(1996 adjustment)

8/23/96
5/26/99
12/13/01
4-18-11

County Project Coordinates	State Plane Coordinates
Northing <u>172076.6856</u>	Y _____
Easting <u>526705.6101</u>	X _____

Date 12/13/01

# CERTIFICATE OF LOCATION OF GOVERNMENT CORNER

County of Anoka

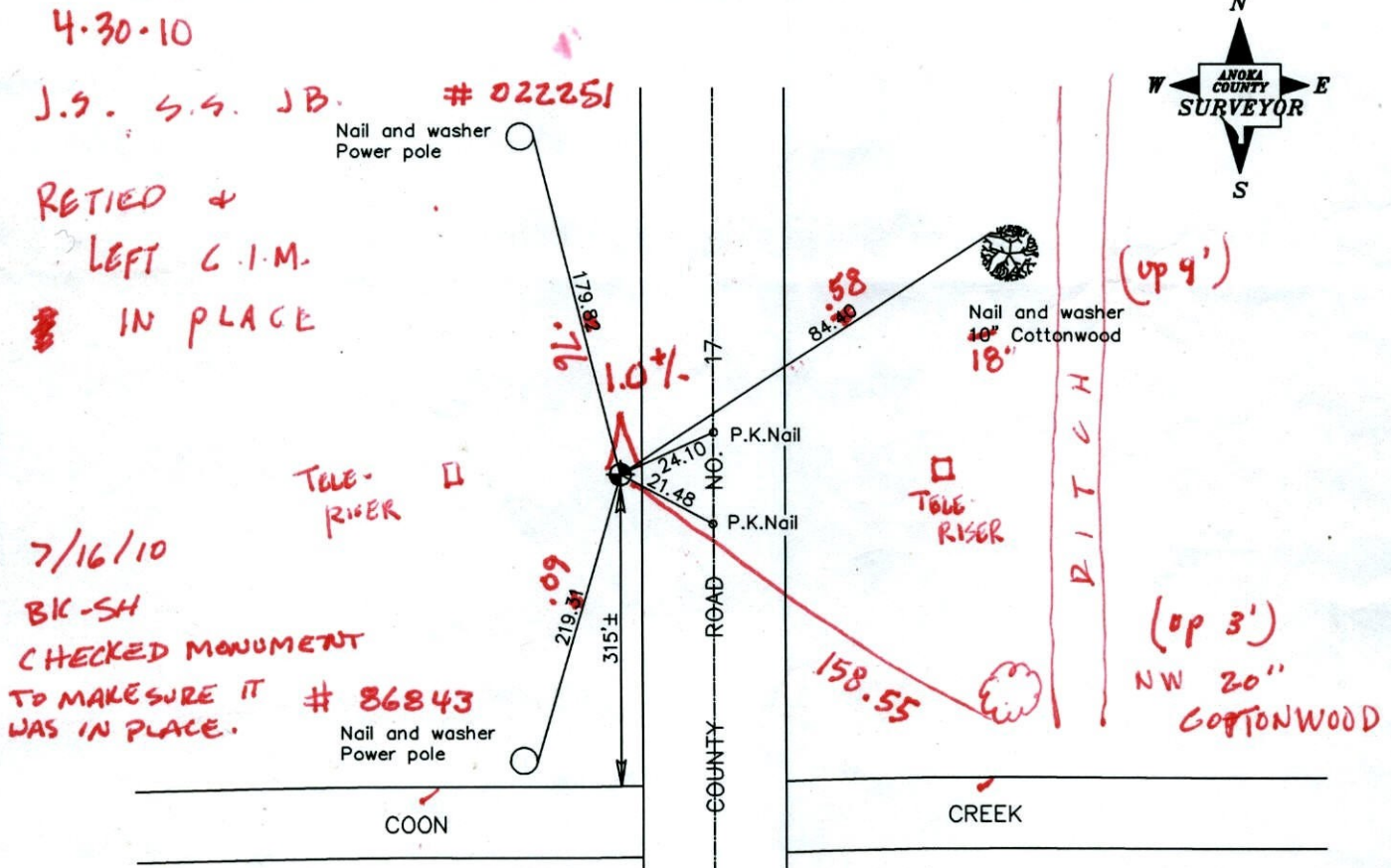
State of Minnesota

East 1/4 Corner of Sec. 26 Township 32 Range 23

I hereby certify that on the 24th day of August, 1966, I found the described corner which was evidenced by area resurvey

and I further certify that to perpetuate the location of said corner, I did, at the exact location thereof, place a permanent marker consisting of a cast iron monument down 0.5'±, near edge of blacktop

which reference or witness monuments are located in the manner following:



Revised date

8/23/96
5/26/99
12/13/01

N.A.D. 1983 Coordinates (1996 adjustment)

County Project Coordinates	State Plane Coordinates
Northing <u>172076.6856</u>	Y _____
Easting <u>526705.6101</u>	X _____

Date 12/13/01



# CERTIFICATE OF LOCATION OF GOVERNMENT CORNER

County of Anoka

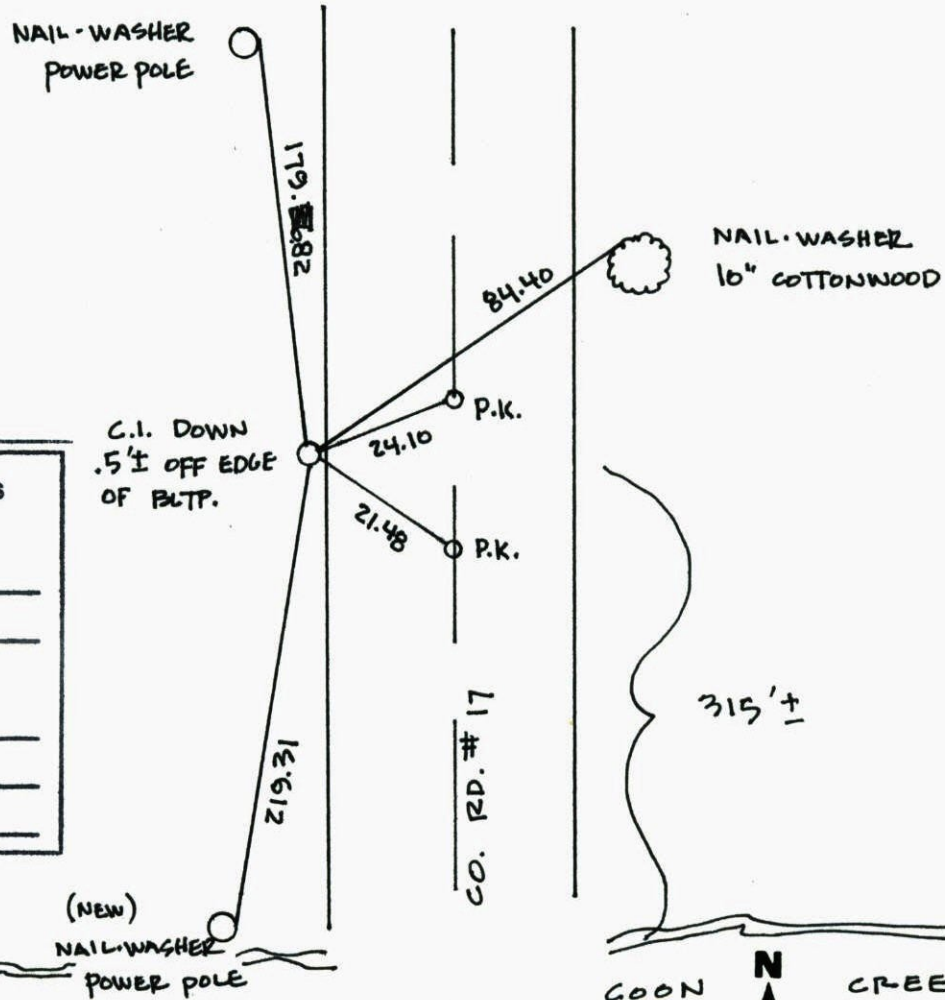
State of Minnesota

EAST QTR. Corner of Sec. 26 Township 32 Range 23

I hereby certify that on the 24<sup>TH</sup> day of AUGUST, 19 66, I found the described corner which was evidenced by AREA RESURVEY

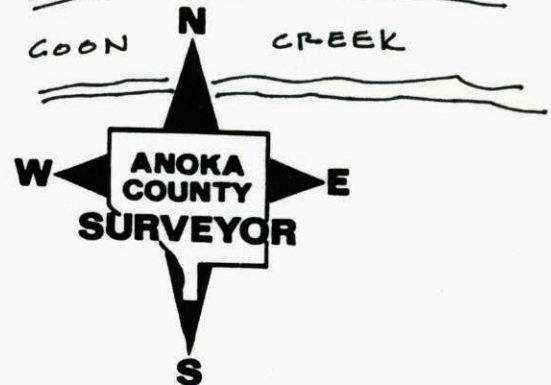
and I further certify that to perpetuate the location of said corner, I did, at the exact location thereof, place a permanent marker consisting of CAST IRON MONUMENT

which reference or witness monuments are located in the manner following:



N.A.D.	1983	Co-ordinates
County	Project	Co-ordinates
Northing	<u>172076.6856</u>	
Easting	<u>526705.6101</u>	
State Plane Co-ordinates		
Y	_____	
X	_____	
Date	_____	

Revised date	Revised date	Revised date
6-26-82		
6-30-87		
11-26-91		
8-23-96		
5-26-99		
12-13-01		

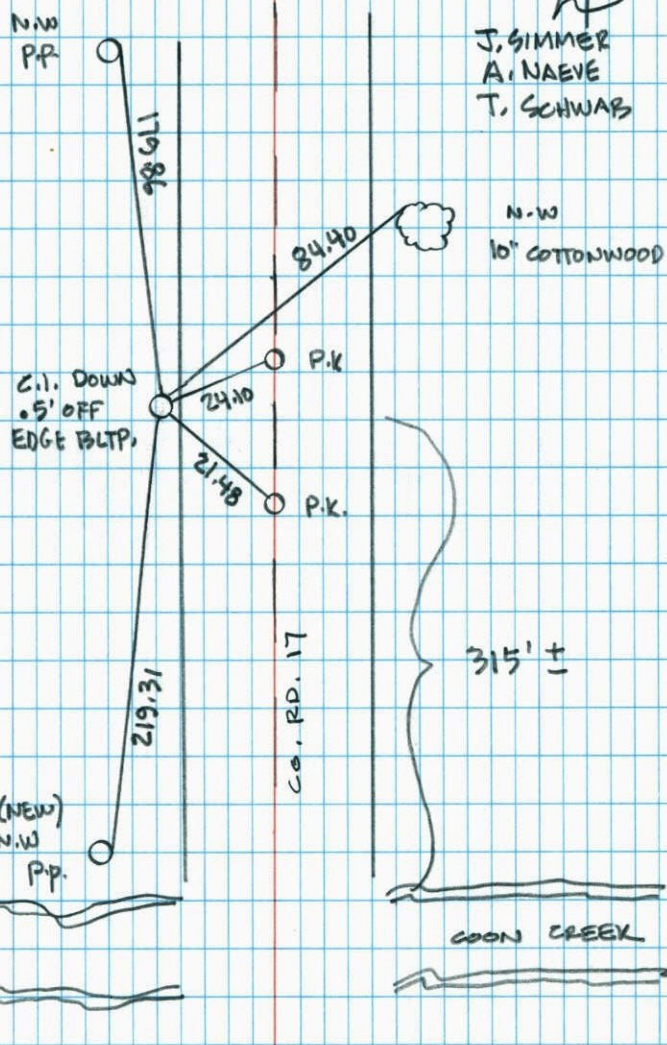




EAST 1/4 COR. SEC 26 T 32 R 23

RETIED C.I.

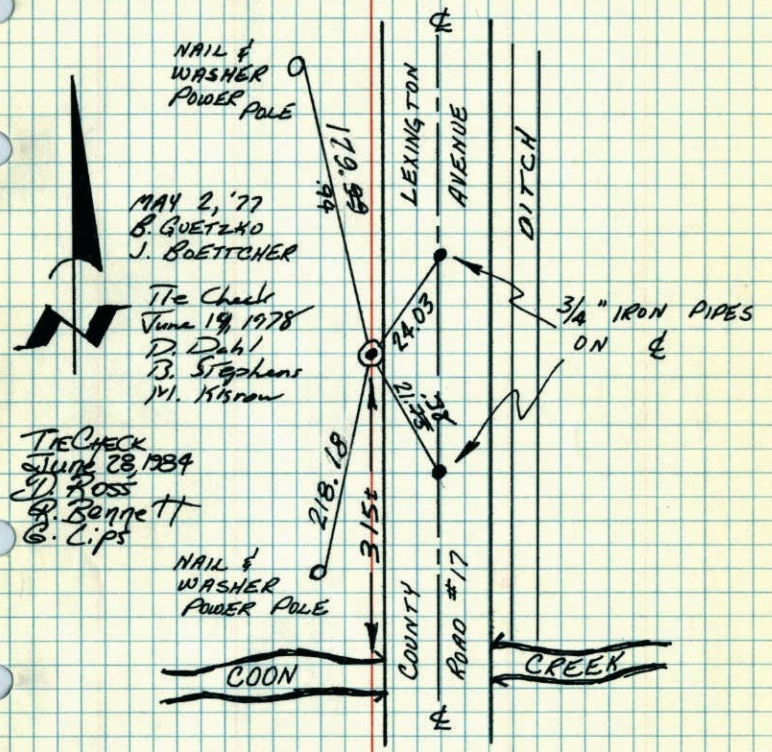
5-26-99  
J. SIMMER  
A. NAEVE  
T. SCHWAB



NATIONAL PRINTFAST NO. 446

E 1/4 COR. SEC. 26-T32-R23

RETIED CAST IRON MONUMENT AFTER DITCH WAS PUT IN ON EAST SIDE OF COUNTY ROAD AND TIE TREES WERE TAKEN OUT. CAST IRON MONUMENT FLUSH AT EDGE OF BLACKTOP. PK'S 2.00' NE & SE. 3/4" IRON PIPES ON E.



MAY 2, '77  
B. GUETZKO  
J. BOETTCHER  
Tie Check  
June 19, 1978  
D. Dahl  
B. Stephens  
M. Kistrow

TIE CHECK  
JULY 28, 1984  
D. ROSS  
G. BENNETT  
G. LIPS

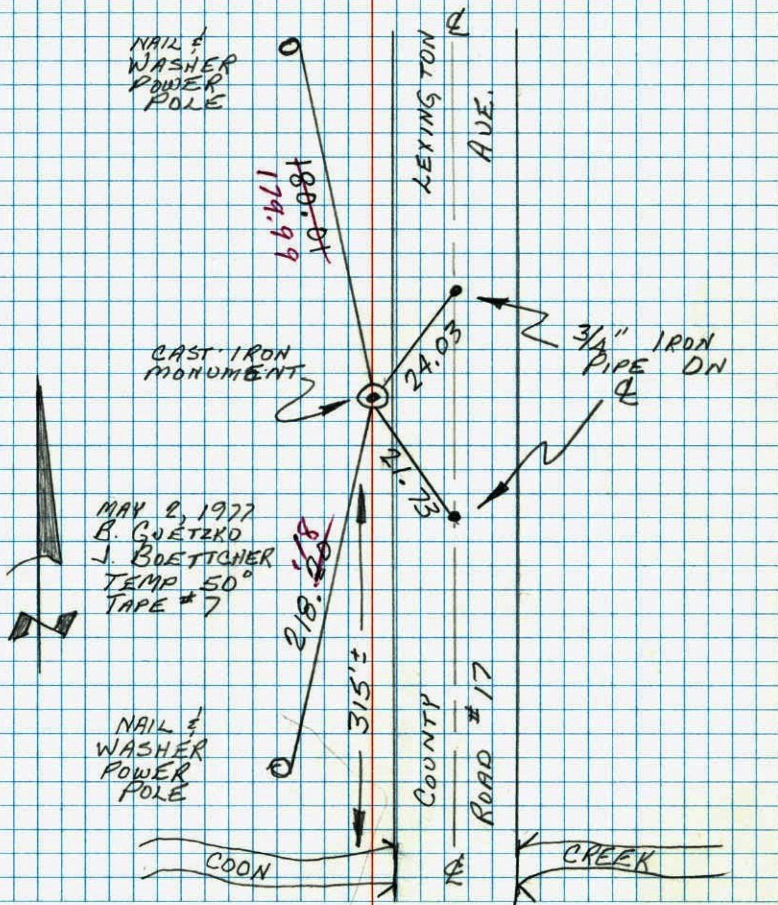
TEMPERATURE CORRECTED  
AND HORIZONTALLY  
TAPED MEASUREMENTS

ROLAND W. ANDERSON  
COUNTY SURVEYOR  
ANOKA COUNTY, MINNESOTA



E 1/4 COR. SEC. 26-T32-R23

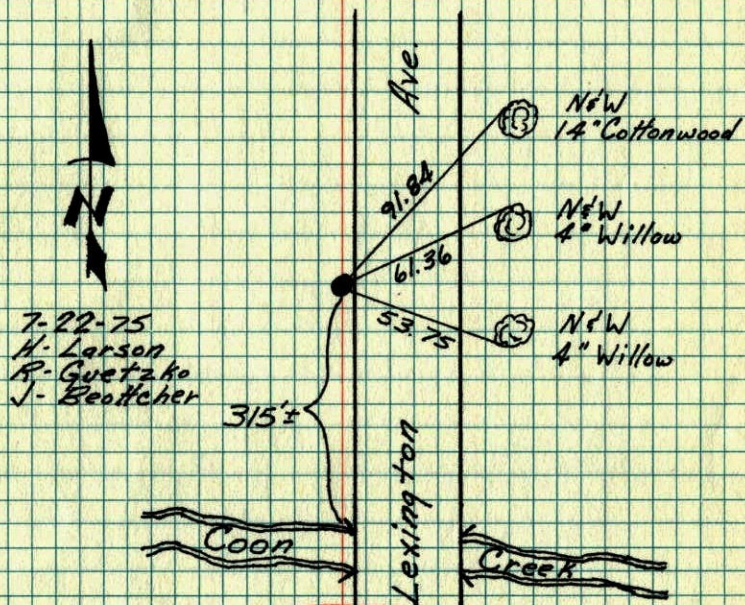
RETIED CAST IRON MONUMENT AFTER  
DITCH WAS PUT IN ON EAST SIDE  
OF ROAD AND TIE TREES TAKEN OUT.  
CAST IRON MONUMENT FLUSH AT EDGE  
OF BLACKTOP. PK'S 2.00' NE & SE. 3/4"  
IRON PIPES ON  $\phi$ .



MAY 2, 1977  
B. GUETZKO  
J. BOETTCHER  
TEMP 50°  
TAPE #7

E 1/4 Cor. Sec. 26-T32-R23

Reset Cast Iron After Loss Of  
Ties (CI) Flush At Edge Of Blacktop  
PK'S 2.00' NE & SE



SEE TIES  
NEW TIE BOOK

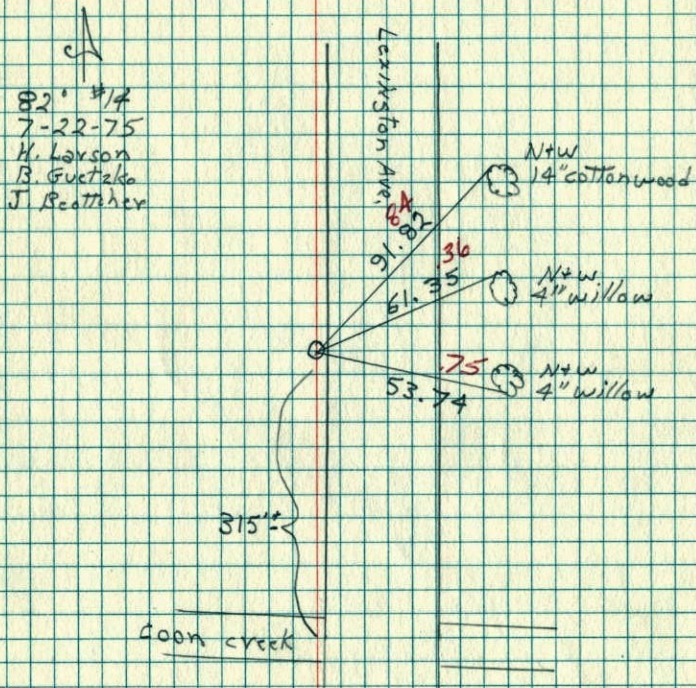
TEMPERATURE CORRECTED  
AND HORIZONTALLY  
TAPED MEASUREMENTS

ROLAND W. ANDERSON  
COUNTY SURVEYOR  
ANOKA COUNTY, MINNESOTA



E 1/4 Cor. Sec. 26 T32 R23

Reset cast iron after loss of  
Ties (E I) Flush at edge of Blk top.  
PKS 2.00' NE + SE



E 1/4 Cor. Sec. 26 - T32 - R23

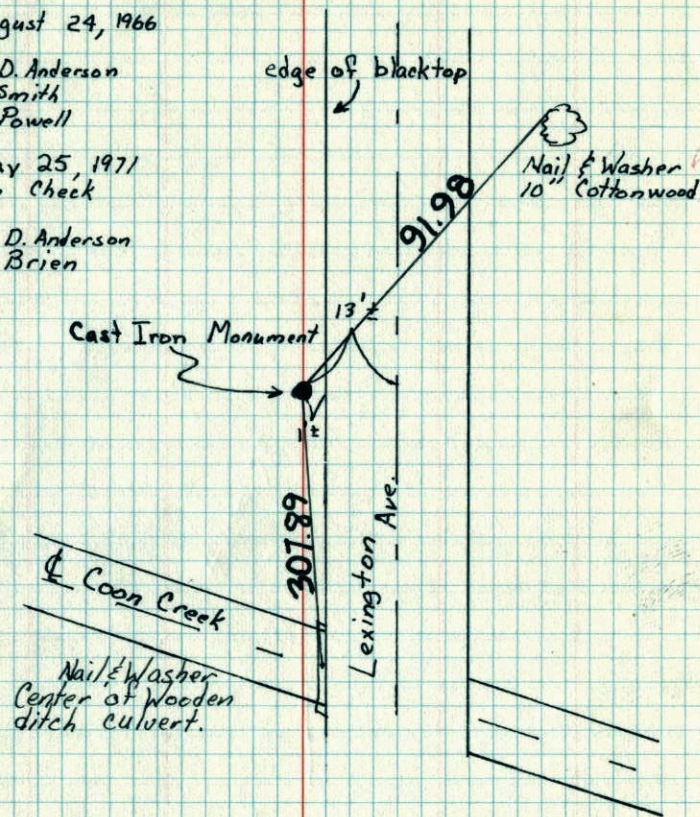
Set Cast Iron Monument from area  
resurvey

August 24, 1966

M. D. Anderson  
R. Smith  
D. Powell

May 25, 1971  
Tie Check

M. D. Anderson  
R. Brien



TEMPERATURE CORRECTED  
AND HORIZONTALLY  
TAPED MEASUREMENTS

ROLAND W. ANDERSON  
COUNTY SURVEYOR  
ANOKA COUNTY, MINNESOTA



